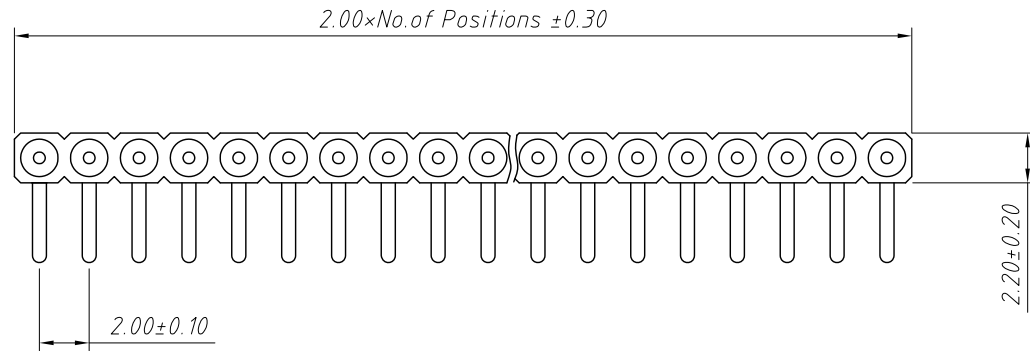


Material:
Housing: 30% Glass filled PPS UL94V-0
Contacts: Brass
Plating: Gold plated over 50u" nickel

Electrical Characteristics:
Current Rating: 2.0 AMP
Voltage Rating: 60V AC/DC
Insulator Resistance: 1000M Ω min. at 100V AC
Contact Resistance: 20m Ω max.
Operating Temperature: -40°C ~ +105°C

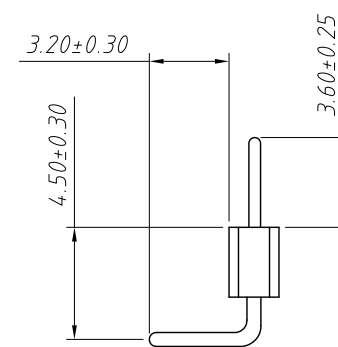
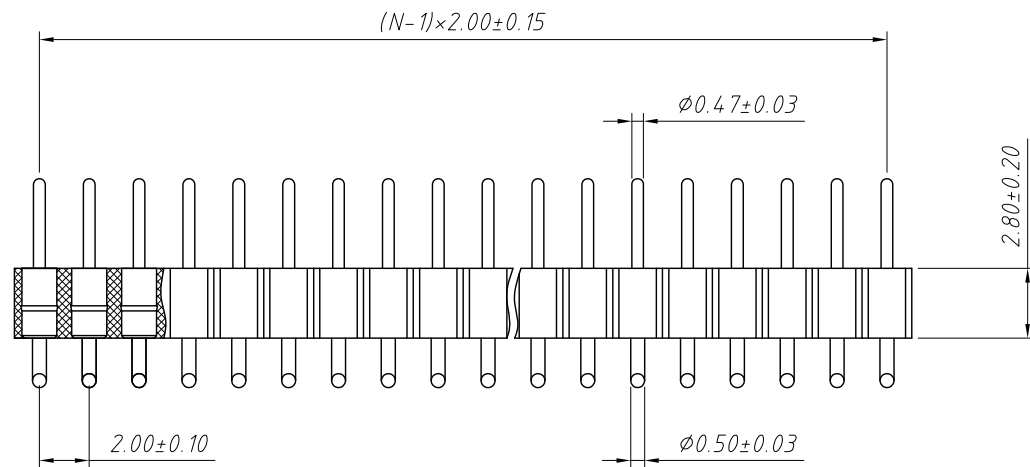
Order Information:
L-KLS1-209XB-1-XX-S
L: RoHS
IC Socket
ROW:
1-Single layer
2-Double layer
No. of 2~80pins
Type: S-Straight Pin
R-Right Angle Pin T-SMT Pin

GENERAL TOLERANCE	PROJECTION		Description:
X. ± 0.50	UNITS	mm	2.0mm Round Pin Header SIP Socket Connector
.X ± 0.25	SCALE	1:1	
.XX ± 0.10	Draw by:	Jenny	
ANGLE TOLERANCE	Check by:		KLS P/N: L-KLS1-209XB-1-XX-S
X. $\pm 5^\circ$	Date	2018-03-01	NingBo KLS ELECTRONIC CO.,L TD.
.X $\pm 3^\circ$	SHEET	1 OF 1	
.XX $\pm 2^\circ$			



Material:
 Housing: 30% Glass filled PPS UL94V-0
 Contacts: Brass
 Plating: Gold plated over 50u" nickel

Electrical Characteristics:
 Current Rating: 2.0 AMP
 Voltage Rating: 60V AC/DC
 Insulator Resistance: 1000M Ω min. at 100V AC
 Contact Resistance: 20m Ω max.
 Operating Temperature: -40°C ~ +105°C

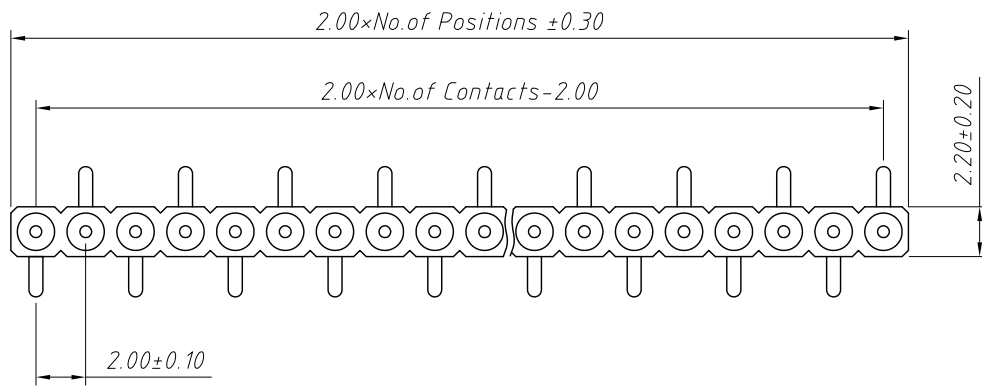


Order Information:

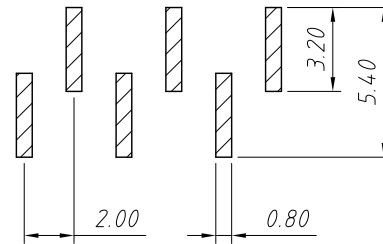
L-KLS1-209XB-1-XX-R

L: RoHS
 IC Socket
 ROW:
 1-Single layer
 2-Double layer
 No. of 2~80 pins
 Type: S-Straight Pin
 R-Right Angle Pin T-SMT Pin

GENERAL TOLERANCE	PROJECTION		Description:
X. ±0.50	UNITS	mm	2.0mm Round Pin Header SIP Socket Connector
.X ±0.25	SCALE	1:1	
.XX ±0.10	Draw by:	Jenny	
ANGLE TOLERANCE	Check by:		KLS P/N: L-KLS1-209XB-1-XX-R
X. ±5°	Date	2018-03-01	NingBo KLS ELECTRONIC CO.,L TD.
.X ±3°	SHEET	1 OF 1	
.XX ±2°			



Recommended P.C.Board Layout



Material:

Housing: 30% Glass filled PPS UL94V-0

Contacts: Brass

Plating: Gold plated over 50u" nickel

Electrical Characteristics:

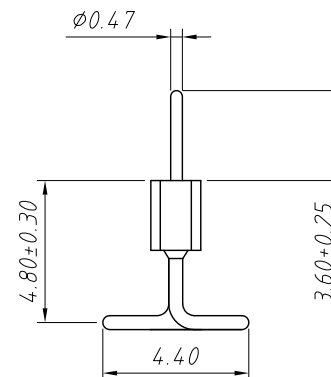
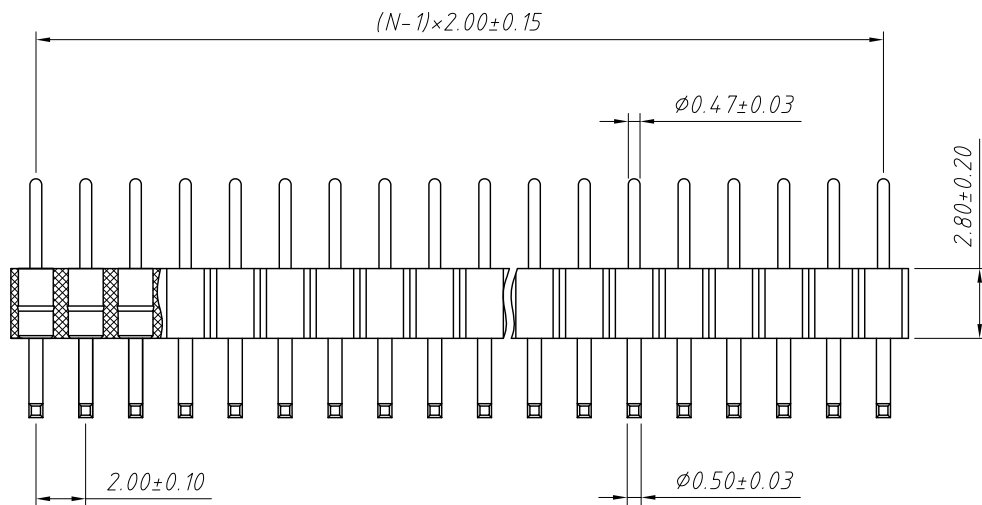
Current Rating: 2.0 AMP

Voltage Rating: 60V AC/DC

Insulator Resistance: 1000M Ω min. at 100V AC

Contact Resistance: 20m Ω max.

Operating Temperature: -40°C ~ +105°C



Order Information:

L-KLS1-209XB-1-XX-T2

L: RoHS

IC Socket

ROW:

1-Single layer

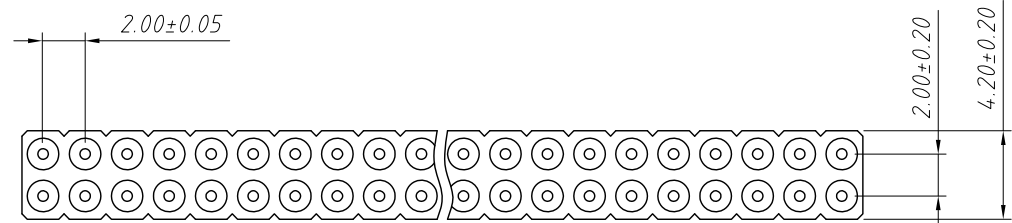
2-Double layer

No. of 2~80 pins

Type: S-Straight Pin

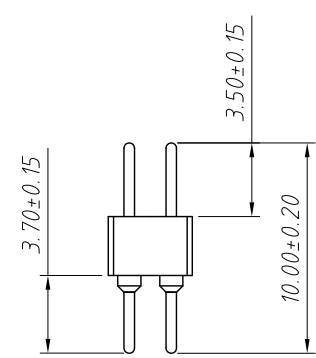
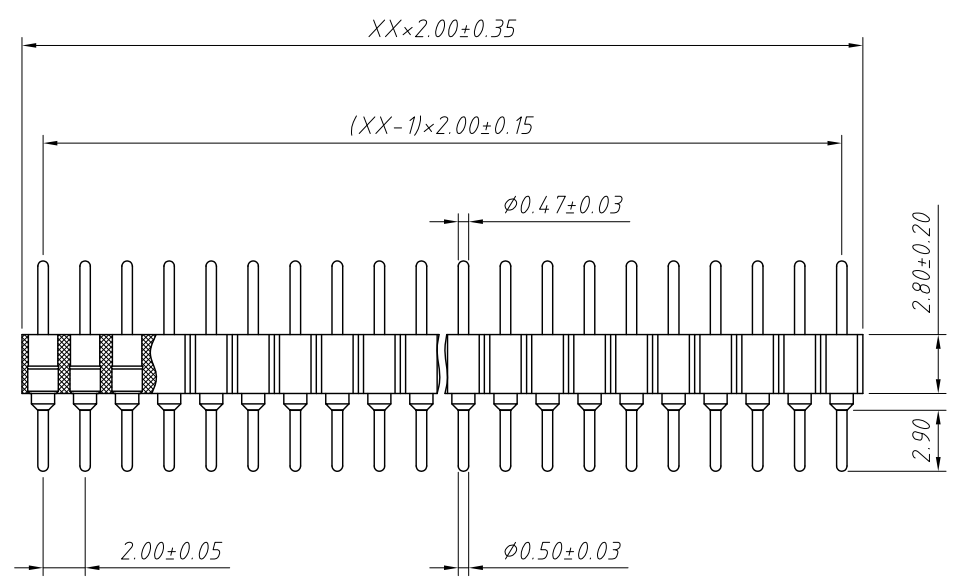
R-Right Angle Pin T2-SMT Pin

GENERAL TOLERANCE	PROJECTION		Description:
X. ±0.50	UNITS	mm	2.0mm Round Pin Header SIP Socket Connector
.X ±0.25	SCALE	1:1	
.XX ±0.10	Draw by:	Jenny	
ANGLE TOLERANCE	Check by:		KLS P/N: L-KLS1-209XB-1-XX-T2
X. ±5°	Date	2018-03-01	NingBo KLS ELECTRONIC CO.,L TD.
.X ±3°	SHEET	1 OF 1	
.XX ±2°			



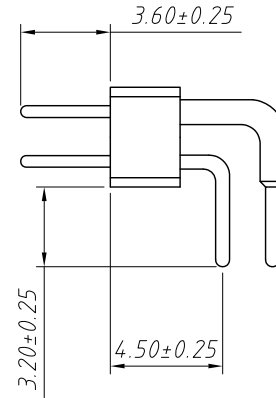
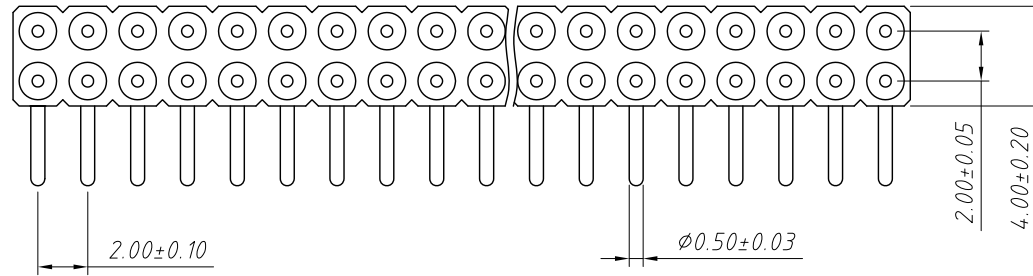
Material:
 Housing: 30% Glass filled PPS UL94V-0
 Contacts: Brass
 Plating: Gold plated over 50u" nickel

Electrical Characteristics:
 Current Rating: 2.0 AMP
 Voltage Rating: 60V AC/DC
 Insulator Resistance: 1000MΩ min. at 100V AC
 Contact Resistance: 20mΩ max.
 Operating Temperature: -40°C ~ +105°C



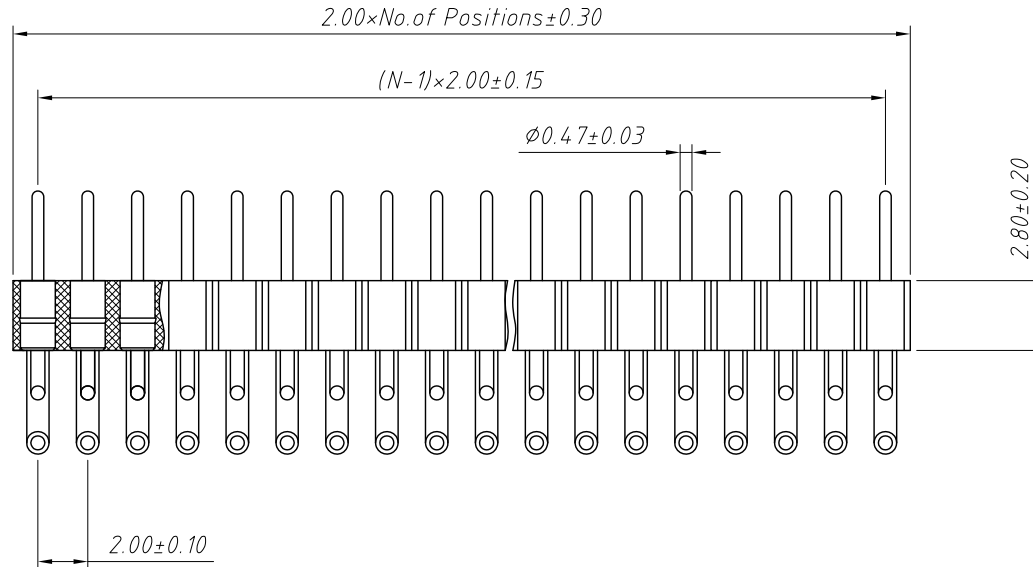
Order Information:
 L-KLS1-209XB-2-XX-S
 L: RoHS
 IC Socket
 ROW:
 1-Single layer
 2-Double layer
 No. of 2~80pins
 Type: S-Straight Pin
 R-Right Angle Pin T-SMT Pin

GENERAL TOLERANCE	PROJECTION		Description:
X. ±0.50	UNITS	mm	2.0mm Round Pin Header SIP Socket Connector
.X ±0.25	SCALE	1:1	
.XX ±0.10	Draw by:	Jenny	
ANGLE TOLERANCE	Check by:		KLS P/N: L-KLS1-209XB-2-XX-S
X. ±5°	Date	2018-03-01	NingBo KLS ELECTRONIC CO.,L TD.
.X ±3°	SHEET	1 OF 1	
.XX ±2°			



Material:
 Housing: 30% Glass filled PPS UL94V-0
 Contacts: Brass
 Plating: Gold plated over 50u" nickel

Electrical Characteristics:
 Current Rating: 2.0 AMP
 Voltage Rating: 60V AC/DC
 Insulator Resistance: 1000M Ω min. at 100V AC
 Contact Resistance: 20m Ω max.
 Operating Temperature: -40°C ~ +105°C

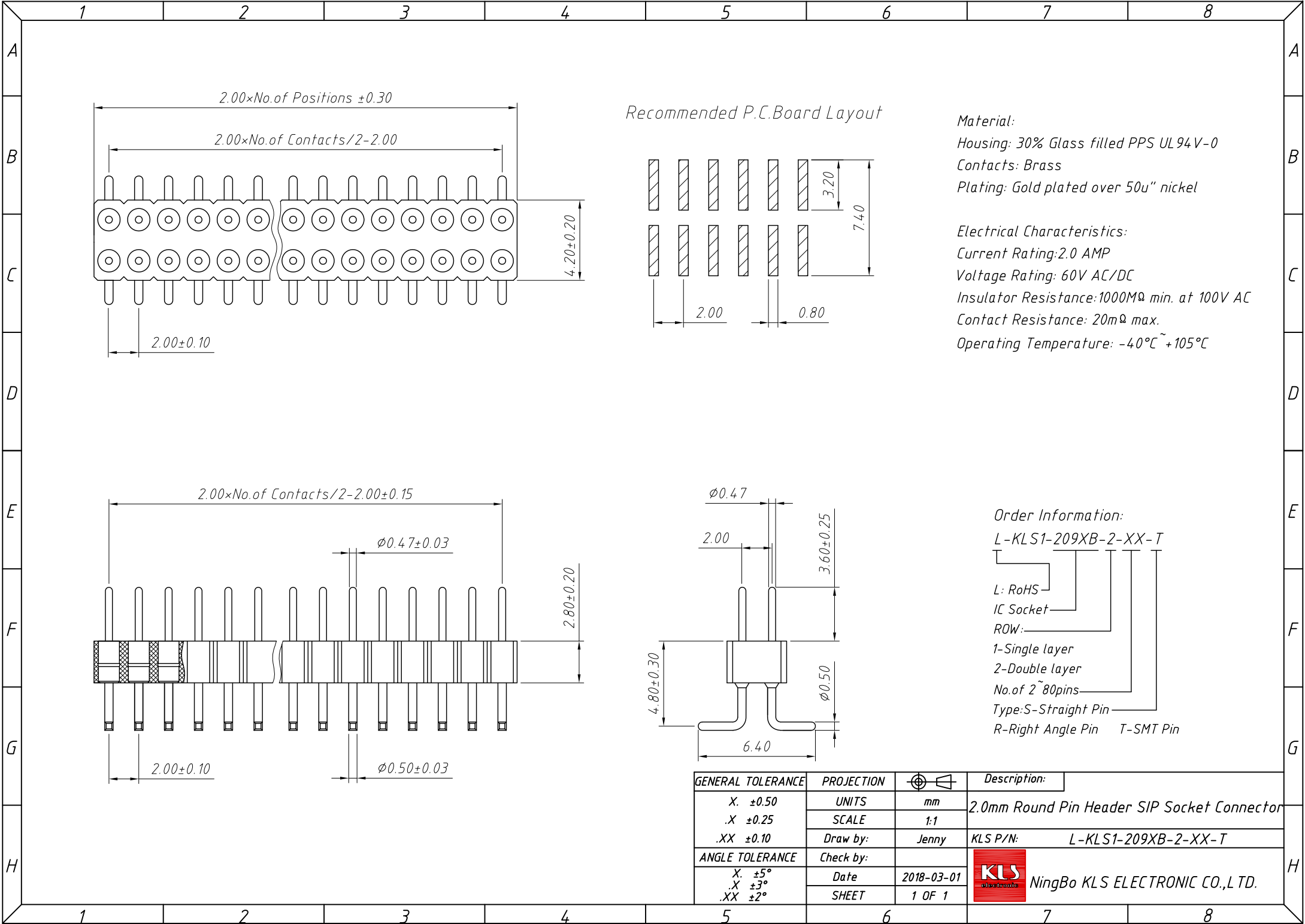


Order Information:

L-KLS1-209XB-2-XX-R

L: RoHS
 IC Socket
 ROW:
 1-Single layer
 2-Double layer
 No. of 2~80pins
 Type: S-Straight Pin R-Right Angle Pin T-SMT Pin

GENERAL TOLERANCE	PROJECTION		Description:
X. ±0.50	UNITS	mm	2.0mm Round Pin Header SIP Socket Connector
.X ±0.25	SCALE	1:1	
.XX ±0.10	Draw by:	Jenny	
ANGLE TOLERANCE	Check by:		KLS P/N: L-KLS1-209XB-2-XX-R
X. ±5°	Date	2018-03-01	NingBo KLS ELECTRONIC CO.,L TD.
.X ±3°	SHEET	1 OF 1	
.XX ±2°			



Recommended P.C.Board Layout

Material:
 Housing: 30% Glass filled PPS UL94V-0
 Contacts: Brass
 Plating: Gold plated over 50u" nickel

Electrical Characteristics:
 Current Rating: 2.0 AMP
 Voltage Rating: 60V AC/DC
 Insulator Resistance: 1000M Ω min. at 100V AC
 Contact Resistance: 20m Ω max.
 Operating Temperature: -40°C ~ +105°C

Order Information:
 L-KLS1-209XB-2-XX-T

L: RoHS
 IC Socket
 ROW:
 1-Single layer
 2-Double layer
 No. of 2~80pins
 Type: S-Straight Pin
 R-Right Angle Pin T-SMT Pin

GENERAL TOLERANCE	PROJECTION		Description:
X. ± 0.50	UNITS	mm	2.0mm Round Pin Header SIP Socket Connector
.X ± 0.25	SCALE	1:1	
.XX ± 0.10	Draw by:	Jenny	
ANGLE TOLERANCE	Check by:		KLS P/N: L-KLS1-209XB-2-XX-T
X. $\pm 5^\circ$	Date	2018-03-01	NingBo KLS ELECTRONIC CO.,L TD.
.X $\pm 3^\circ$	SHEET	1 OF 1	
.XX $\pm 2^\circ$			